

Hessisches Ministerium
für Kultus, Bildung und Chancen

HESSEN



Successfully Learning the German Language

Support Scheme for Children and Young People with
an Immigrant Background in the Federal State of Hesse



Imprint

Editor:

Hessisches Ministerium
für Kultus, Bildung und Chancen (HMKB)
Luisenplatz 10
65185 Wiesbaden
Telefon: 0611 368-0
<https://kultus.hessen.de>

Responsible:

Christopher Textor

Editorial staff:

Ingrid Altenburger, Martina Goßmann, Graziella Hofmann,
Eva-Maria Jakob, Anne-Dorothea Stübing

Cover:

© STEEX/peopleimages.com – stock.adobe.com

Layout:

pi.Design Group, www.pi-design.de

Printed by:

Hessisches Statistisches Landesamt, Wiesbaden

Number:

10100

Version:

Third revised edition, May 2025

Content

Preface	4
Language Support Scheme	5
Pre-School Preparatory Courses	6
Language Courses for Children with Deferred Admission	7
German Language & PC	8
German Language Special Classes	9
Intensive Classes at Schools of General Education	10
Intensive Courses at Schools of General Education	11
Intensive Classes at Vocational Schools (InteA)	12
Fostering German Language in Dual Education	14
Schooling for Refugees	15
Contact Partners	16



To the readers of this brochure

As Education Minister for the federal state of Hesse I am delighted, in this brochure, to present to you an important focus of our educational work: the teaching of German as the language for education.

Many children and young people here have grown up without German as their native language: perhaps their family has migrated here, or they are school-age children with little or no German who have only recently arrived here from abroad. For these individuals, successful participation in school lessons is a virtually unattainable goal if they lack sufficient knowledge of German. Which is why, here in Hesse, we have created a comprehensive language support programme for schools, one which has proven its worth over a number of years. It has now helped many thousands of pupils to achieve formal school-leaving qualifications, and good prospects for their futures, in our country.

For all pupils in our schools, gaining full proficiency in the German language – enabling them to use it properly and confidently – is the basic prerequisite for active involvement, for successful graduation from secondary school, and for obtaining vocational qualifications here, whether or not they go on to study. Mastery of German as the language used in education is also the foundation for participation in society within our country.

On the following pages I will be introducing this comprehensive language development programme for schools, a measure enshrined in Hesse's School Education Act. It is available to all children and adolescents who need support with the German language, starting with pre-schoolers and covering all age groups and all educational tracks up to and including vocational education. And, in general, it is mandatory.

If you have any questions on this subject, do not hesitate to contact your local school leadership team or the local education authority (Staatliches Schulamt).

With best wishes,

A handwritten signature in blue ink, appearing to read 'Schwarz', written in a cursive style.

Armin Schwarz Hessian Minister of Education

Language Support Scheme

Mastering the German language is essential for the success of children and young people both at school and in their professional lives and therefore necessary for successful integration. That is why it is important that right from the beginning all students are supported while learning German.

The overall language support scheme at schools with its **different elements** of supporting children and young people who are non-German speakers is based on the scientific insights in this field.

The overall language support scheme consists of

- Pre-school preparatory courses
- Language courses in case of deferred admission
- German Language & PC at primary schools with a high proportion of immigrants
- German language support courses at schools of general education
- Intensive classes at schools of general education
- Intensive courses at schools of general education
- Literacy courses
- Intensive classes at vocational schools (InteA)
- Fostering German language learning in dual education

Continuous language education throughout all school subjects serves for improving educational and technical language.

Pre-school Preparatory Courses

for children in their last year before starting school



Primary schools offer preparatory courses as a support for all children who, at the time of enrolment, have no sufficient German language skills. Primary schools and day care facilities cooperate closely.

Pre-school preparatory courses

- are binding,
- help all children with acquiring sufficient German language skills before starting primary school,
- take place at primary schools and/or day care facilities,
- begin twelve months – that is one school year – before starting school.

Parents must enrol their children in the March or April approximately 18 months before starting school in the following year.

During the enrolment procedure it will thus be possible to decide if the children have age-appropriate German language skills or if they need support.

When enrolling their children at school, all parents will receive detailed advice about support for their children.

Language Courses

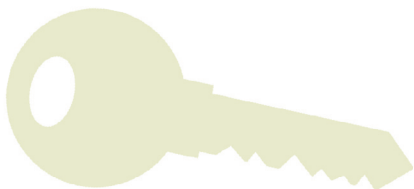
for children with deferred admission to primary school to help them successfully start school

If children, at the time of enrolment at school, have no sufficient German language skills, they may be deferred from schooling. These children are then **obliged** to attend a **German language course** to further support them with acquiring German language skills.

Language courses in case of deferred admission

- are compulsory,
- take place as preparatory classes or special language courses at primary schools,
- enable all children to improve their German language skills after one year,
- allow for subsequent enrolment in class 1 in case of a positive development of their language skills.

During the year of deferment all parents receive detailed advice on support for their children enabling a successful career at school.



German Language & PC

**for pupils at primary school
to improve their
German language skills**

German Language & PC helps a number of primary schools with a high proportion of immigrants to support children whose German language skills need improvement.

German Language & PC

- supports children in their first year at school on a daily basis and parallel to class teaching in German and Mathematics,
- is continued in classes 2 to 4,
- functions as a support for teaching by using PC tutorials,
- allows the purposeful and individual support of pupils.

German Language & PC is the result of a cooperation project of the Hessian Ministry of Education and the Gemeinnützige Hertie-Stiftung (Hertie Foundation).



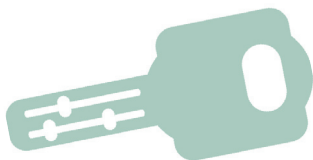
German Language Special Classes

for students of different ages
to improve their
German language skills

Schools offer compulsory German language special classes as support for students who already have basic German language skills but need further improvement.

German language special classes

- help students to have a better understanding and use of the German language both in speaking and writing,
- support students on their way towards a better school leaving certificate,
- consist of
 - at primary school: up to two additional lessons per week,
 - at schools of Secondary Education I and II: up to four additional lessons per week.



Intensive Classes at Schools of General Education

for immigrants of school age
without sufficient
German language skills

Schools with larger numbers of immigrants offer compulsory intensive classes. They are meant as support for students who must acquire basic German language skills.

Intensive classes

- are compulsory for all immigrants required to attend school,
- may be organised at regional or transregional level,
- communicate basic German language skills,
- usually take one year and prepare for the transition to regular classes.

The integration of these students may be supported, among others, by including them in regular lessons such as PE, Music and Art. Also in extra-curricular activities. Their participation in the appropriate lessons of regular classes of the same school is an important goal.



Intensive Courses at Schools of General Education

for immigrants of school age
without sufficient
German language skills

In the context of regular schooling, schools offer compulsory intensive courses serving as a support for immigrants who have little or no German language skills and are not capable of attending intensive classes.

Intensive courses

- communicate basic German language skills,
- take up to two years.

Literacy courses

address students who

– have not attended any school
and/or

– must learn the Latin alphabet as an additional alphabet,
and take place in intensive classes or intensive courses
during class time. Literacy courses may also take place
as part of InteA at vocational schools.

Intensive Classes at Vocational Schools

(Integration und Abschluss – InteA [Integration and Graduation]) for immigrants between the ages of 16-18* without sufficient German language skills

In vocational education schools offer compulsory intensive classes for these students. This offer addresses all students who must at first acquire basic German language skills for their transition to vocational education or to change to another course of education.

Intensive classes at vocational schools

- are an offer for all immigrants at vocational schools between the ages of 16-18*,
- communicate basic German language skills in combination with the acquisition of vocational technical language,
- take up to two years,
- are supposed to allow for flexible transition to other kinds of educational courses,
- open access to the world of training and professions.

This is additionally supported by a social pedagogy offer funded by the Hessian Ministry of Labour, Integration, Youth and Social Affairs.

In addition, refugees aged 18-21* can take part in an intensive class at vocational schools (InteA) due to the Hessian Concept to Integrate Refugees and to Maintain Solidarity.

** Based on the age of entry into the intensive class.*



Fostering German Language

for former immigrants in dual
education in the context of the
second day at vocational schools*

Former immigrants can be offered additional field-specific German language classes in the context of the second day at vocational schools.

Fostering German Language in Dual Education

- supports former immigrants' specific needs to complete dual education successfully,
- adds 4 additional German lessons to 12 regular German lessons,
- Parting from a basic level, classes are designed to be continued at technical level.

** In dual education, students normally spend three days a week working on the holding. The remaining two days are spent at vocational schools. For former immigrants, the second day at vocational schools is designed to provide field-specific language classes.*



Schooling for Refugees

Compulsory School Attendance

In Hesse there is compulsory school attendance. For all children who have reached the end of their sixth year by June 30th, full-time compulsory education starts on August 1st each year. Usually it lasts over nine years (primary school and Secondary Level I). According to the school laws of the Federal State of Hesse, the children of asylum seekers who, in the course of their recognition procedure, have already been attributed to a territorial authority (district or municipality) are subject to compulsory school attendance. According to the valid legal regulations, usually all children and young people at the age of 6-16 (give or take a few months) attend school.

Integration of refugees at our schools

Language support for refugees with little or no German language skills takes place at schools of general education, that is at primary schools and schools of Secondary Education I or II, primarily in intensive classes or intensive courses. In the intensive classes and courses, there are also literacy courses for those without previous school education. At vocational schools, language support takes place through InteA.

Counselling of refugees on the choice of school

Reception and counselling centres (Aufnahme- und Beratungszentren or ABZ) for immigrants are established at all 15 Federal State's school boards. This is where immigrant parents or refugees may receive advice on which kind of school provides support suitable for their respective needs.

For further information please see the Internet pages of the Hessian Ministry of Education.

Contact Partners

All schools and Federal State's school boards in Hesse will be happy to help you with finding the German language support offer which suits your needs.

Furthermore, reception and counselling centres for immigrants with little or no German language skills are established at all Federal State's school boards (Aufnahme- und Beratungszentren or ABZ). For further information please see the Internet pages of the Hessian Ministry of Education.

HESSEN



**Hessisches Ministerium
für Kultus, Bildung und Chancen**
Luisenplatz 10
65185 Wiesbaden
<https://kultus.hessen.de>